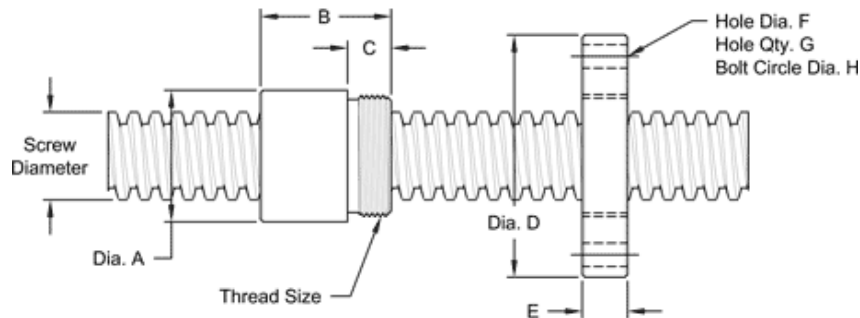


This 5/8 – 4 double lead stub acme machine screw is available in stainless steel with a corresponding aluminum bronze nut. Both right-hand and left-hand threads are available.

MACHINE SCREW SPECIFICATIONS	RH	LH
STAINLESS STEEL SCREW PART NO.	SS 063 R 025 S	SS 063 L 025 S
THREAD FORM	STUB ACME	
SCREW DIAMETER TURNS / INCH	5/8 - 4	
PITCH / LEAD	0.125 IN./0.250 IN.	
ROOT DIAMETER	0.515 IN.	
SCREW WEIGHT (LB. / FT.)	0.85	
TORQUE TO RAISE 1 POUND	0.079 IN.- LB.	
MAXIMUM SCREW LENGTH	12 FEET	

Nut and Flange Specifications



NUT SPECIFICATIONS	RH	LH
NUT PART NO.	SN 063 R 025 B	SN 063 L 025 B
NUT WITH FLANGE PART NO.	SF 063 R 025	SF 063 L 025
DYNAMIC LOAD CAPACITY (LBS.)	1,953	
STATIC LOAD CAPACITY (LBS.)	6,250	
EFFICIENCY	51.4%	
MATERIAL	BRONZE	
NOMINAL DIAMETER "A"	1.12 IN.	
NUT LENGTH "B"	1.00 IN.	
THREAD LENGTH "C"	0.50 IN.	
THREAD SIZE	0.937-16 UN	
FLANGE PART NO.	FL-0937	
FLANGE DIAMETER "D"	2.60 IN.	
FLANGE THICKNESS "E"	0.53 IN.	
FLANGE HOLE DIAMETER "F"	0.266 IN.	
NUMBER OF HOLES IN FLANGE "G"	4	
FLANGE BOLT CIRCLE "H"	2.090 IN.	
FLANGE MATERIAL	BLACK OXIDE COATED STEEL	