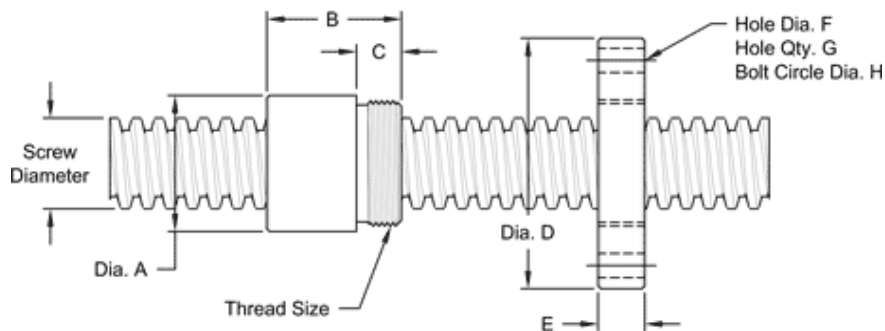


**This 5/8 – 2 double lead stub acme machine screw** is available in alloy steel with a corresponding aluminum bronze nut. Right-hand threads are available.

| MACHINE SCREW SPECIFICATIONS  | RH                   |
|-------------------------------|----------------------|
| ALLOY STEEL SCREW PART NO.    | SS 063 R 050 A       |
| THREAD FORM                   | STUB ACME            |
| SCREW DIAMETER (TURNS / INCH) | 5/8 - 2              |
| PITCH / LEAD                  | 0.250 IN./ 0.500 IN. |
| ROOT DIAMETER                 | 0.426 IN.            |
| SCREW WEIGHT (LB./FT.)        | 0.85                 |
| TORQUE TO RAISE 1 POUND       | 0.120 IN.- LB..      |
| MAXIMUM SCREW LENGTH          | 12 FEET              |

### Nut and Flange Specifications



| NUT SPECIFICATIONS            | RH                       |
|-------------------------------|--------------------------|
| NUT PART NO.                  | SN 063 R 050 B           |
| NUT WITH FLANGE PART NO.      | SF 063 R 050             |
| DYNAMIC CAPACITY (LBS.)       | 1,953                    |
| STATIC CAPACITY (LBS.)        | 6,250                    |
| EFFICIENCY                    | 67.6%                    |
| MATERIAL                      | BRONZE                   |
| NOMINAL DIAMETER "A"          | 1.12 IN.                 |
| NUT LENGTH "B"                | 1.00 IN.                 |
| THREAD LENGTH "C"             | 0.50 IN.                 |
| THREAD SIZE                   | 0.937-16 UN              |
| FLANGE PART NO.               | FL-0937                  |
| FLANGE DIAMETER "D"           | 2.60 IN.                 |
| FLANGE THICKNESS "E"          | 0.53 IN.                 |
| FLANGE HOLE DIAMETER "F"      | 0.266 IN.                |
| NUMBER OF HOLES IN FLANGE "G" | 4                        |
| FLANGE BOLT CIRCLE "H"        | 2.090 IN.                |
| FLANGE MATERIAL               | BLACK OXIDE COATED STEEL |