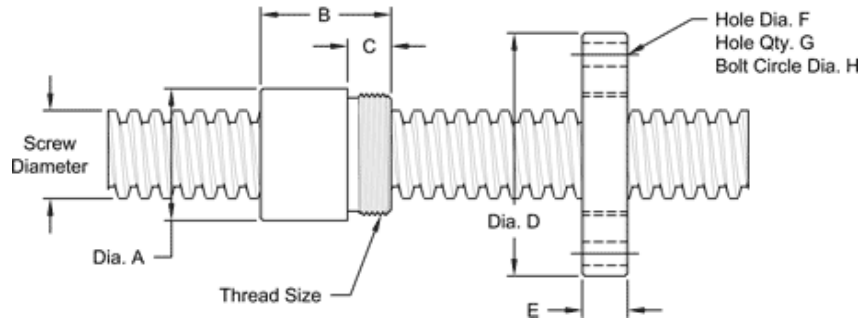


**This 1" - 10 single lead acme machine screw** is available in both alloy steel and stainless steel with a corresponding aluminum bronze nut. Choose from right-hand or left-hand threads.

MACHINE SCREW SPECIFICATIONS	RH	LH
ALLOY STEEL SCREW PART NO.	AS 100 R 010 A	AS 100 L 010 A
STAINLESS STEEL SCREW PART NO.	AS 100 R 010 S	AS 100 L 010 S
THREAD FORM	ACME	
SCREW DIAMETER - TURNS / INCH	1-10	
PITCH / LEAD	0.100 IN.	
ROOT DIAMETER	0.857 IN.	
SCREW WEIGHT (LB./FT)	2.1	
TORQUE TO RAISE 1 POUND	0.078 IN.-LB.	
MAXIMUM SCREW LENGTH	12 FEET	

### Nut and Flange Specifications



NUT SPECIFICATIONS	RH	LH
NUT PART NO.	AN 100 R 010 B	AN 100 L 010 B
NUT WITH FLANGE PART NO.	AF100 R 010	AF 100 L 010
DYNAMIC LOAD CAPACITY (LBS.)	5,000	
STATIC LOAD CAPACITY (LBS.)	16,000	
EFFICIENCY	21.2%	
MATERIAL	BRONZE	
NOMINAL DIAMETER "A"	1.50 IN.	
NUT LENGTH "B"	1.50 IN.	
THREAD LENGTH "C"	0.50 IN.	
THREAD SIZE	1.375-16 UN	
FLANGE PART NO.	FL-1375	
FLANGE DIAMETER "D"	2.75 IN.	
FLANGE THICKNESS "E"	0.52 IN.	
FLANGE HOLE DIAMETER "F"	0.266 IN.	
NUMBER OF HOLES IN FLANGE "G"	4	
FLANGE BOLT CIRCLE "H"	2.260 IN.	
FLANGE MATERIAL	BLACK OXIDE COATED STEEL	